



4th Annual *Ichiyo* Art Retreat & Workshop
With Elaine Jo, Executive Master
Calvin Center, Hampton, GA
November 3 – 5, 2009

Mission Statement:

The Ichiyo Ikebana conference is offered for the purpose of promoting interaction, friendship, and focus among Ichiyo Ikebana artists and their students who are or have studied with Elaine Jo. Held in a retreat setting, the conference will provide a three day intensive workshop to augment regular lessons of the Ichiyo-style of ikebana and to reinforce the motto of the school "The free style of flowers".

PROGRAM:

November 3, Tuesday

11:00 Set up personal interest table and sales table.

12:00-12:45 Welcome Lunch

1:00 Demo & Workshop 1: **Fruit on a Branch**

3:00 Demo & Workshop 2: **Mingeibana**

6:00-6:45 Dinner

7:00 Fellowship hour: Maché containers

November 4, Wednesday

8:00-8:45 Breakfast

7:00-8:00 **Optional Yoga with Bianca**

9:00 Workshop 3: **Exhibit arrangement, Zen-Ei Ikebana**

12:00-12:45 Lunch

1:00 Workshop 4A: **Workshop for Active teachers**

Demo & Workshop 4B: **Contrast Form/Group Contrast Form**

3:00 Demo & workshop 5: **Large arrangement in multiple containers**

6:00-6:45 Dinner

7:00 Fellowship hour

November 5, Thursday

8:00-8:45 Breakfast

7:00-8:00 **Optional Yoga with Bianca**

9:15 Workshop 6: **No Kenzan with personally designed maché container**

11:30 Close down Exhibition, Group clean-up

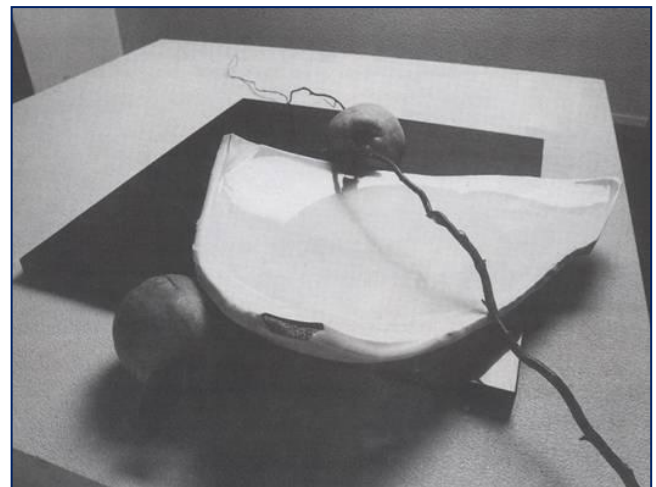
12:00-1:00 **Sayonara Lunch**

Informal planning meeting for *Ichiyo* Ikebana Retreat 2010

November 3, Tuesday

1:00 Workshop 1: Fruit on a Branch

This workshop explores various ways of celebrating the fruits of nature by using several different types of fruit still clinging to their branches or vines. Our material will include apples, persimmon, pears and anything else we can find. These branches will be heavy so please bring strong containers. You may also wish to arrange the fruit as an accessory to the main arrangement and lay them on a table plate or wooden mat.



November 3, Tuesday
3:00 Workshop 2: Mingeibana

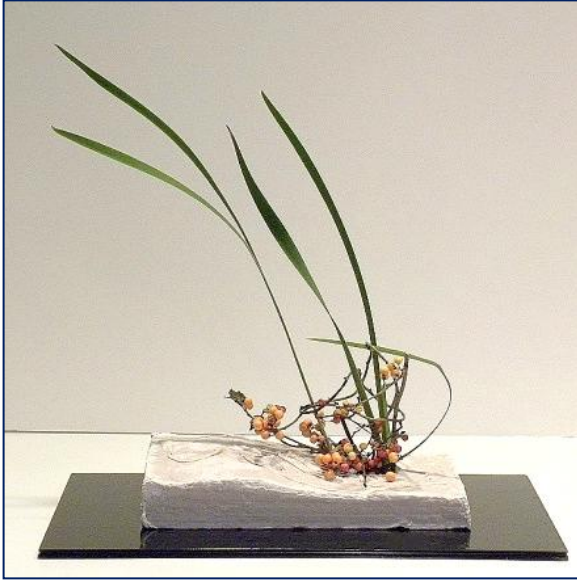
Mingei is identified as traditional and functional Japanese crafts of common people. There is no strict definition of what qualifies as a Mingei craft, but generally this would include old country style ceramics, lacquer products, wood objects, baskets, fabrics, straw items or any other such items not normally be used for flower arranging. Styles are traditionally simple with a minimum use of elements.

I have named this workshop Mingeibana because we will be using these craft items as a point of design interest.



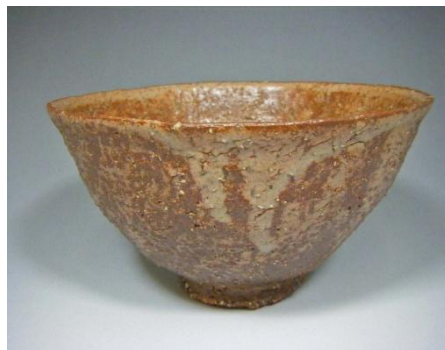
November 3, Tuesday

**7:00: Making a container using fast drying Mache
Presented by Pia Nilsson and Anne Halliwell**



During our fellowship hour we will each design and make a container using Fast maché. The container will include a recessed ceramic or plastic receptacle for holding water. The maché will dry in about 24 hours and we will use it for arranging at our last workshop on Thursday morning. Receptacles will be provided.

Bring a pair of rubber gloves and rubber spatula unless you do not mind working with your bare hands.



November 4, Wednesday

9:00 Workshop 3: Masters Workshop

Presented by Jeanne Houlton and Exhibit of Zen-Ei Ikebana

The theme of this workshop is Zen-Ei (Abstract) Ikebana. Our Master teachers: Valerie Eccleston (Executive Master), Jeanne Houlton, Yuko Hancock, Terri Todd, Libby Campbell, Diane Saye, and Janet Knowlton will set up their arrangements in advance and explain their concept. Jeanne Houlton will present a historical perspective of Zen-Ei Ikebana in the context of Ichiyo philosophy.



After the presentation each person will design and arrange his or her own Zen-Ei Ikebana for the exhibit on location in the dining room.

Please find your own spot before the workshop and identify with your name.

Bring a free style container of your choice.

November 4, Wednesday

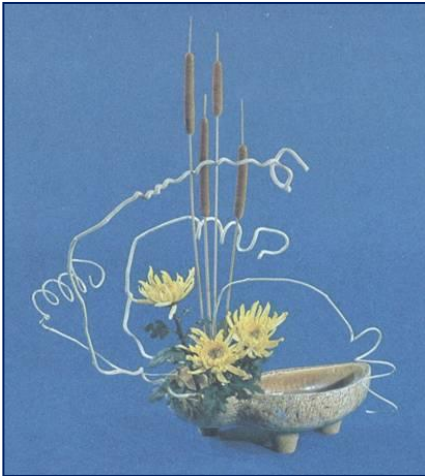
1:00 Workshop 4A: Workshop for Active Teachers

Elaine will discuss various topics such as current styles of Ichiyo, annual reports, curriculum and tests, etc. All active teachers will meet with Elaine in the lounge.

November 4, Wednesday

1:00 Workshop 4B: Contrast Form/Group Contrast Form

Presented by Bianca Lee

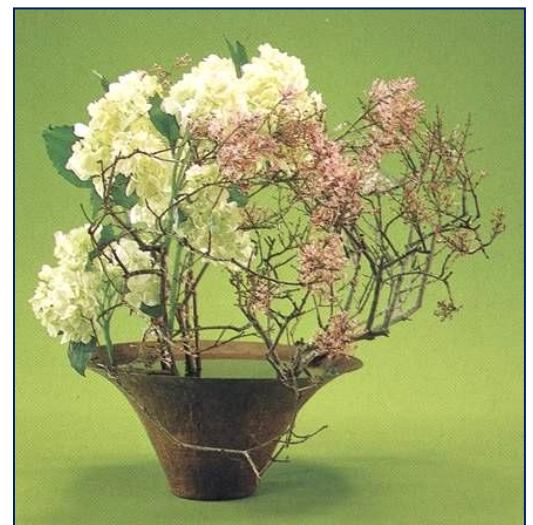


All participants except active teachers will explore the Contrast Form with Bianca. The Contrast Form is a “stable asymmetrical composition” placing materials of different characteristics side by side. The balance through imbalance is accomplished by lateral juxtaposition of different colors, shapes, textures, mass and line movements.



The Group Contrast Form uses three groups of different types of line material: straight, curved and mass. This workshop combines these three different lines into one harmonious contrasting group of materials. You will have a choice of arranging either Contrast form or Group Contrast Form.

Free style containers may be used for Contrast Form. A suiban or a compote with a kenzan would be also appropriate for Group Contrast Form.



November 4, Wednesday

3:00 Workshop 5: Large arrangement in multiple containers

When participating in an exhibit or presenting a demonstration, it is very interesting to create a large sized arrangement using the techniques of the Compound Form studied in the Advanced Course. Many containers of the same shape and/or sometimes different shaped containers can be used. This style can be applied to all ikebana compositions, such as the "Ascending", "Symmetrical", and "Contrast" forms, depending on the material you use. All of these can be combined together to create one arrangement with many open spaces in the composition, giving a pleasing spacial image.

Please bring two or more containers which work well together. There are many different ways of combining the containers as shown in the pictures.



November 5, Thursday

**9:15 Workshop 6: No Kenzan design
with personally designed Mache container**

This is a workshop using the maché containers made Tuesday evening. The recessed insert will be the water source and the arrangement will be simple and modern without the use of a kenzan.